

Supra typical application layout

RADIO CONTROL STATION

- DIMENSION (WxHxD):
- WITH ERGONOMIC KEY: 130x90x85 mm
 - WITH JOYSTICK: 160x120x115 mm
 - WITH PUSH BUTTONS: 160x120x115 mm
 - BATTERY : nr.2 AA

ELECTRICAL BOX

- DIMENSION (WxHxD):
- STANDARD : 400x500x200 mm
 - WITH BATTERY BACK-UP: 500x700x200 mm

POWER SUPPLY: 230 V ± 10% 50HZ
 MINIMUM SECTION: 2,5 mml / 13 AWG

MAX 5 m
 nr.2 x 16mm² \ AWG 6

PARTS ARE FOR SURFACE MOUNTING

THE ELECTRICAL BOX CAN BE INSTALLED AT A MAXIMUM DISTANCE OF 5 m FROM THE RAIL'S END . IN CASE OF CABLE CANALIZATION, USE A CONDUIT PIPE Ø25mm

Measurements are an indication.
 In order to check a machine feasibility, refer to our organizations.

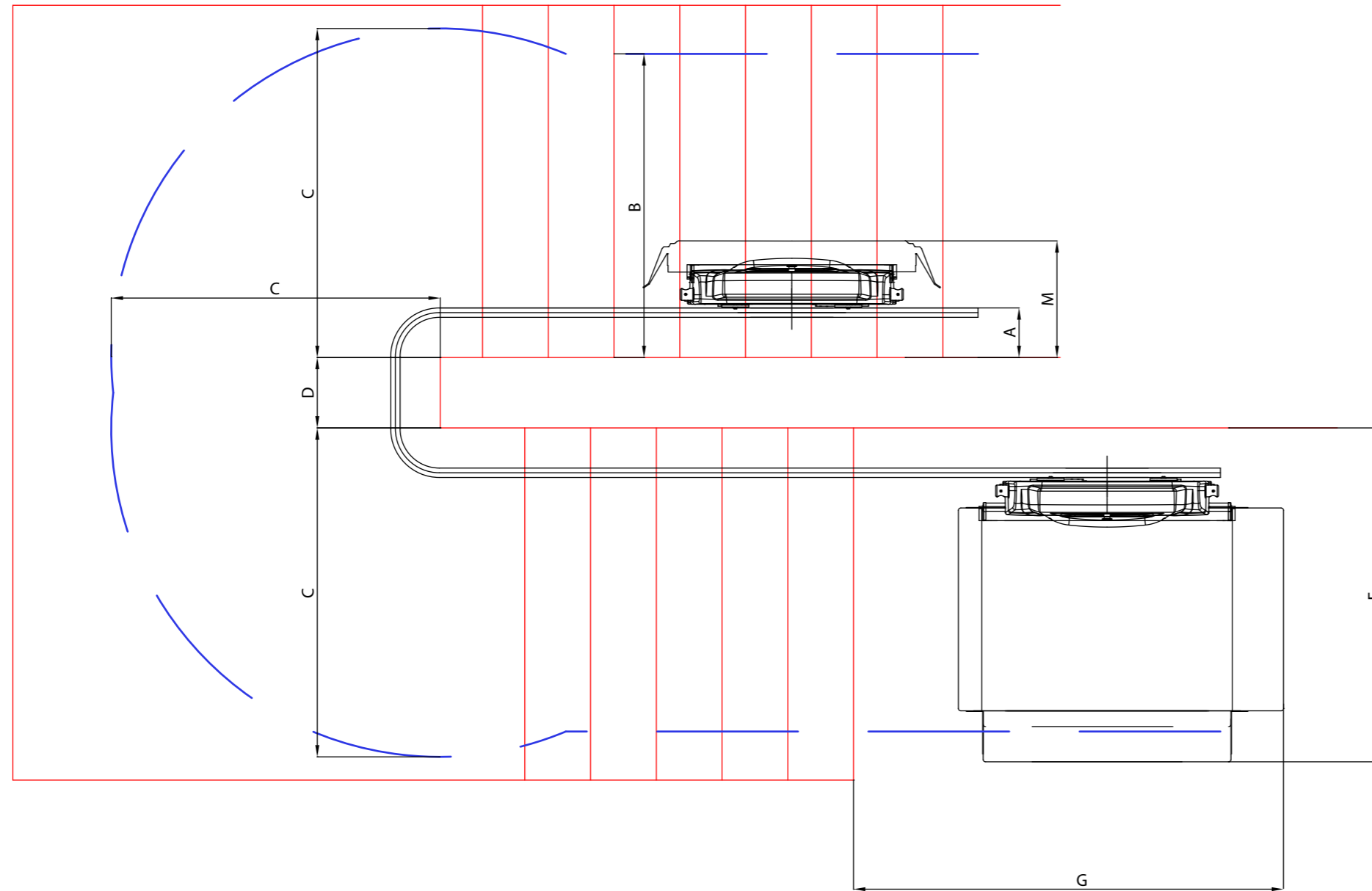
Where not directly specified, measurements are in millimeters

Model :	Supra MY2015
Machine Code :	TP14
Application / Version :	Standard configuration
Drawing Reference :	00/36.020 Rev.01
Rev. :	00



ThyssenKrupp Encasa

Supra encumbrances on the stair



ENCUMBRANCES AND MEASUREMENTS
(with LIGHT STANCHIONS / LONG SIDE ACCESS / CHAMFERED RAMPS)

Nominal Size 850x650

- A = 165
- B = 1025
- C = 1120
- D varies
- E = 1195
- M = 470
- G see table below

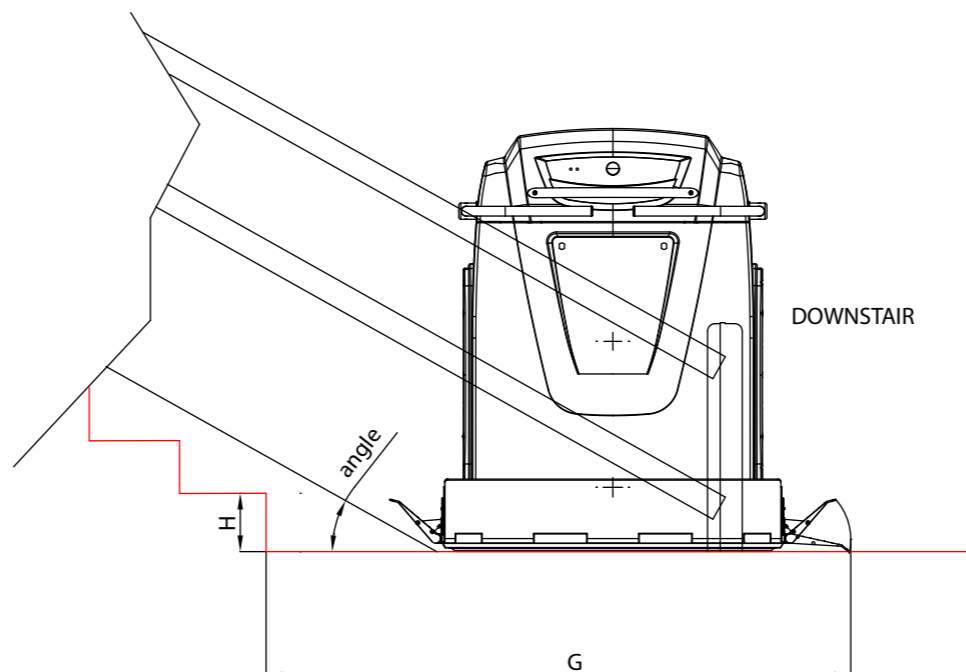
Nominal Size 1050x710

- A = 165
- B = 1085
- C = 1221
- D varies
- E = 1255
- M = 470
- G see table below

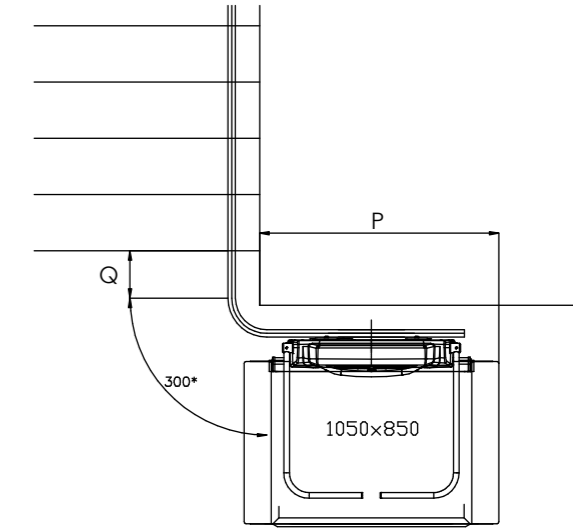
Nominal Size 1250x850

- A = 165
- B = 1225
- C = 1393
- D varies
- E = 1395
- M = 470
- G see table below

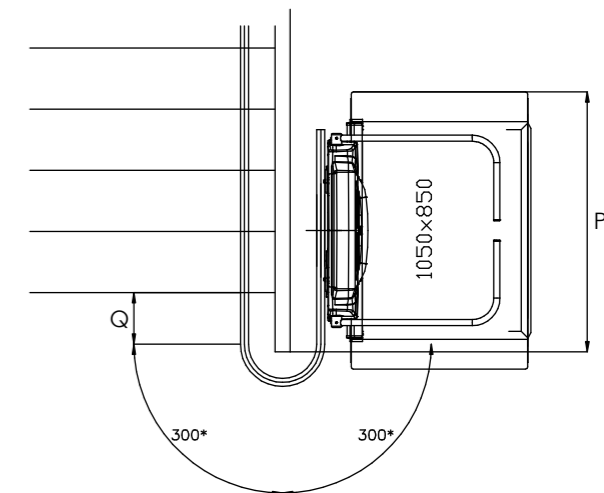
Bottom landing space (G)			Bottom landing space (G)			Bottom landing space (G)		
Angle	Rated load	G	Angle	Rated load	G	Angle	Rated load	G
45°	190 kg	H+1130	45°	190 kg	H+1320	45°	190 kg	H+1520
35°	250 kg	H+1240	35°	250 kg	H+1430	35°	250 kg	H+1630
30°	300 kg	H+1300	30°	300 kg	H+1490	30°	300 kg	H+1690



PARKING CURVES ENCUMBRANCES



P = Bottom landing space (G) - Q - 300*
*: 300 is the approx. length of a 90° curve



P = Bottom landing space (G) - Q - 600**
**: 600 is the approx. length of a 90° curve

Measurements are an indication.
In order to check a machine feasibility, refer to our organizations.

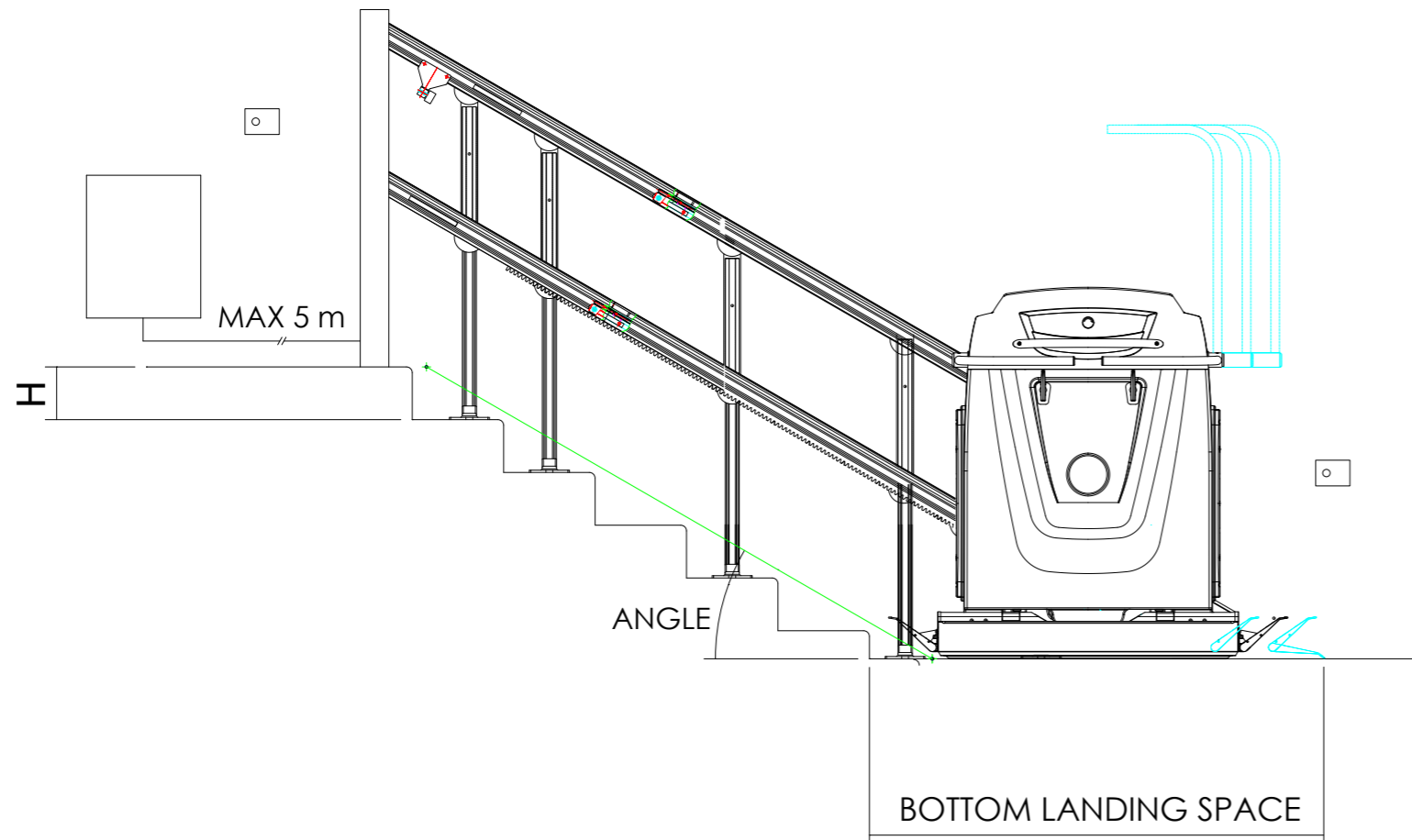
Where not directly specified, measurements are in millimeters

Model :	Supra MY2015
Machine Code :	TP14
Application / Version :	Encumbrances on the stair
Drawing Reference :	-
Rev. :	00



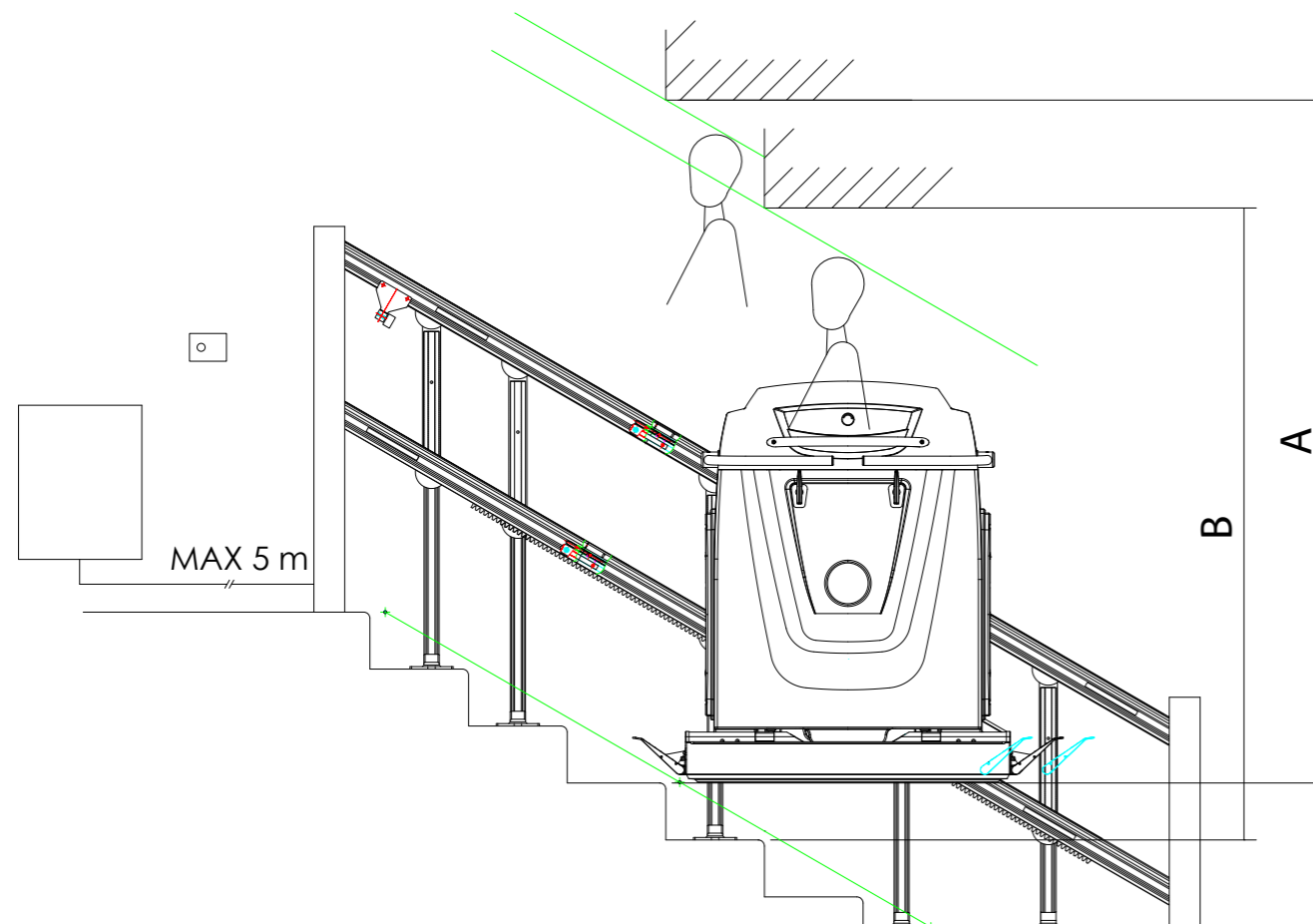
ThyssenKrupp Encasa

Supra overall dimensions - Free height - Landing space



FRONT VIEW
LANDING SPACE

ANGLE	PLATFORM LENGHT		
	850	1050	1250
45°	H+1130	H+1320	H+1520
35°	H+1240	H+1430	H+1630
30°	H+1300	H+1490	H+1690



FRONT VIEW
FREE HEIGHT (A / B)

ANGLE	PLATFORM LENGHT					
	850		1050		1250	
0°	A:1900	B:1500	A:1900	B:1500	A:1900	B:1500
5°	A:1950	B:1560	A:1950	B:1570	A:1960	B:1580
10°	A:1990	B:1620	A:2000	B:1630	A:2020	B:1650
15°	A:2020	B:1690	A:2050	B:1700	A:2080	B:1730
20°	A:2070	B:1740	A:2100	B:1780	A:2140	B:1810
25°	A:2120	B:1810	A:2160	B:1850	A:2210	B:1900
30°	A:2170	B:1890	A:2220	B:1940	A:2280	B:2000
35°	A:2230	B:1970	A:2290	B:2030	A:2360	B:2130
40°	A:2290	B:2060	A:2370	B:2140	A:2460	B:2310
45°	A:2370	B:2170	A:2470	B:2320	A:2570	B:2520

A: HEAD OF STANDING USER (HEIGHT 1.8 m)
B: HEAD OF SITTING USER (HEIGHT 1.4 m)

Measurements are an indication.
In order to check a machine feasibility, refer to our organizations.

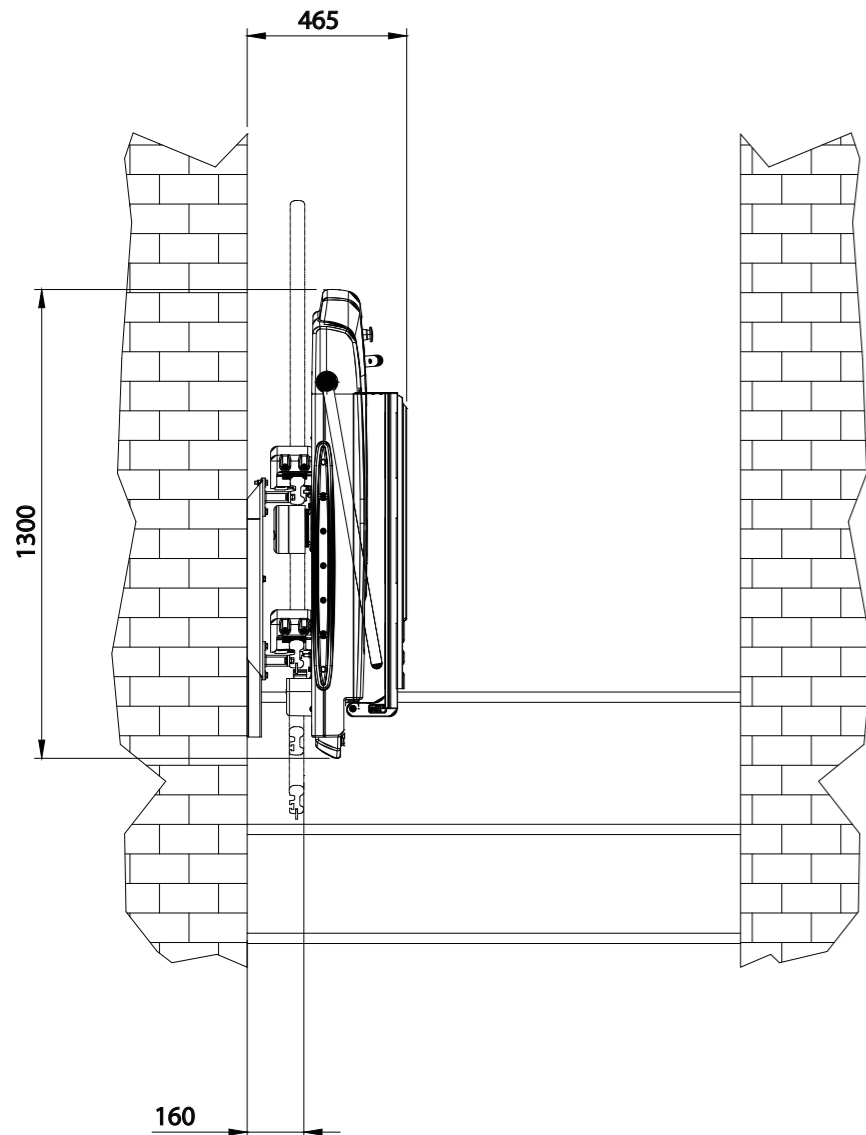
Where not directly specified, measurements are in millimeters

Model :	Supra MY2105
Machine Code :	TP14
Application / Version :	Free height - Land. space
Drawing Reference :	00/36.100 Rev.04
Rev. :	00

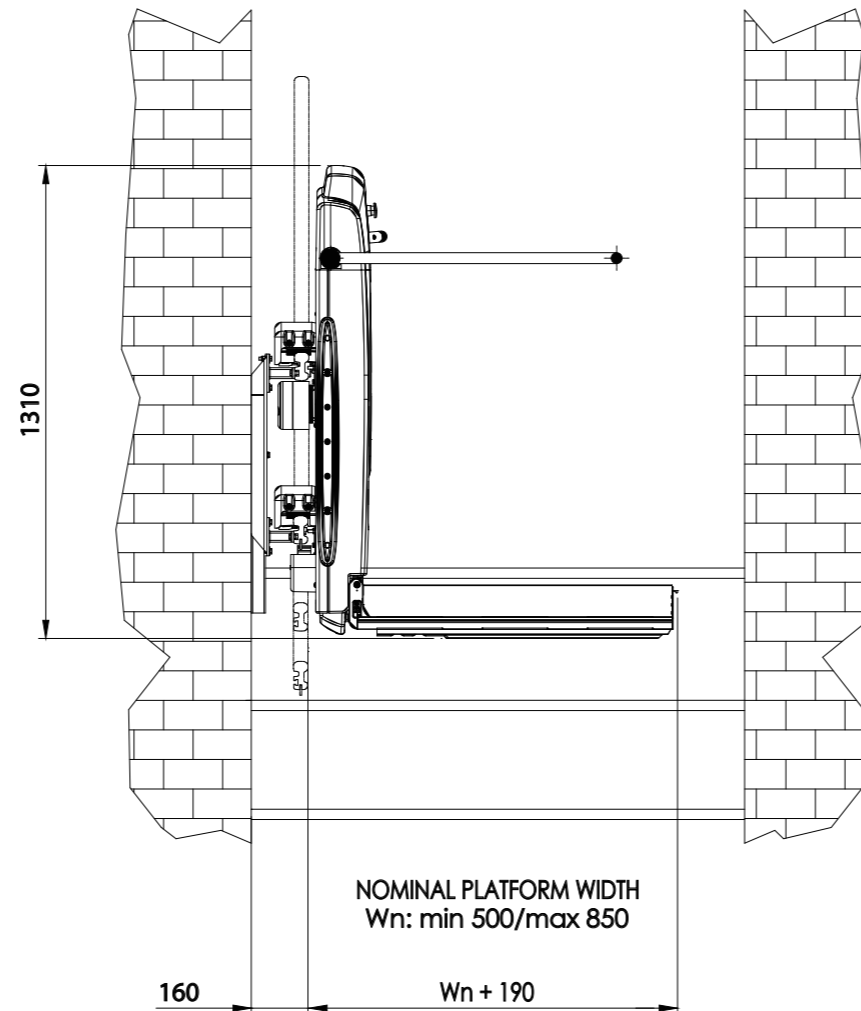


Supra overall dimensions - Wall fixing

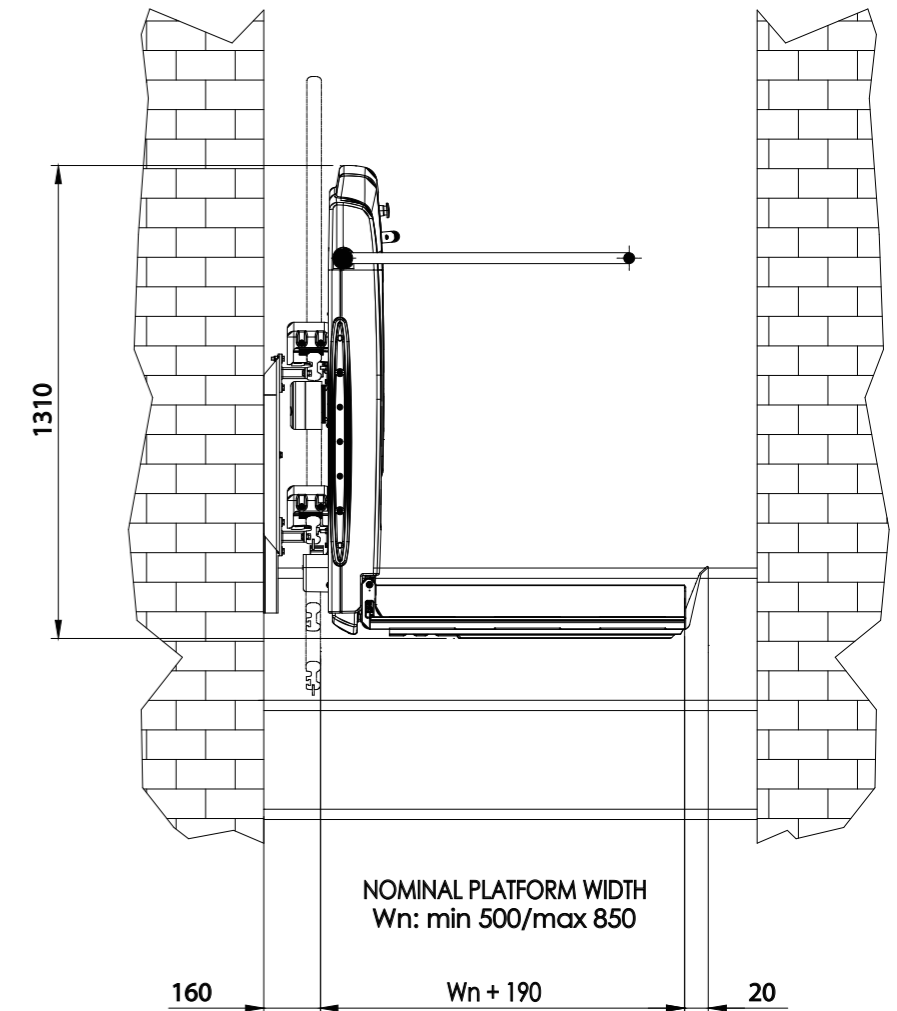
FOLDED PLATFORM - SIDE VIEW



UNFOLDED PLATFORM - SIDE VIEW



UNFOLDED PLATFORM SIDE VIEW WITH LONG SIDE ACCESS



Measurements are an indication.
In order to check a machine feasibility, refer to our organizations.

Where not directly specified, measurements are in millimeters. Tolerances ± 10

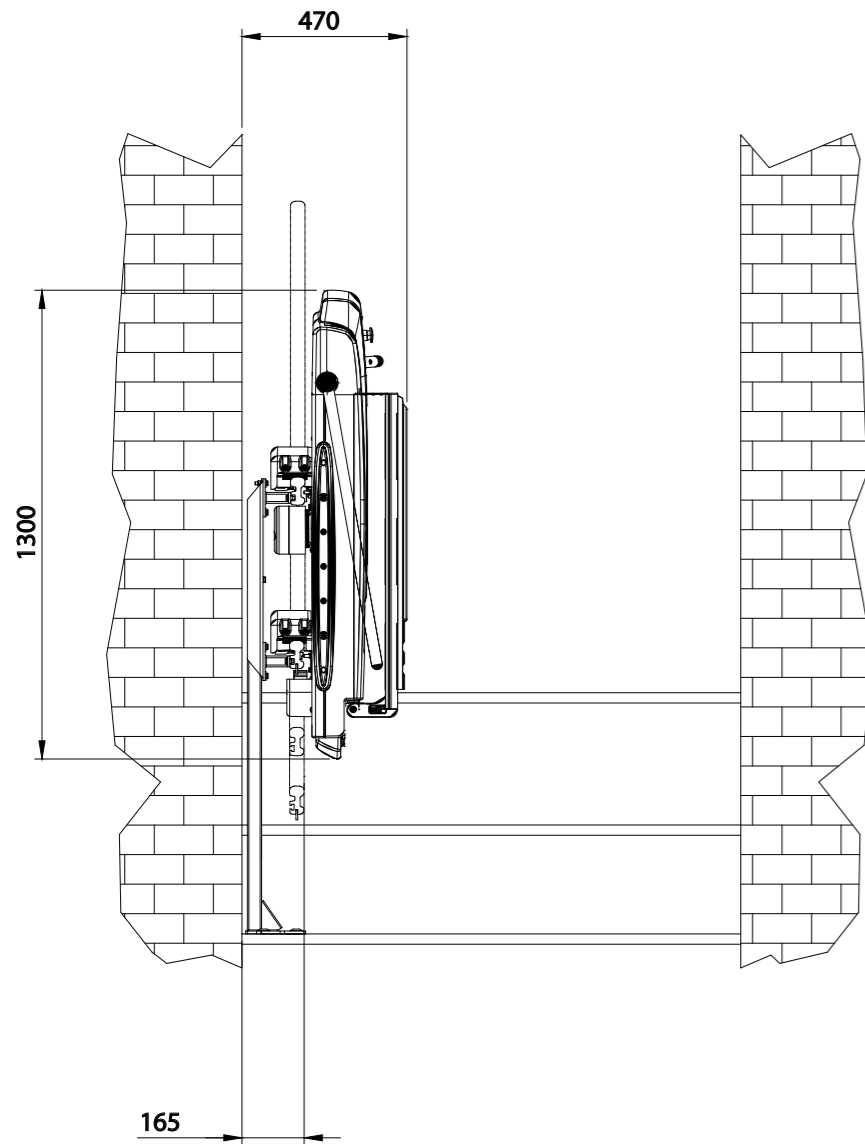
Model :	Supra MY2015
Machine Code :	TP14
Application / Version :	Wall fixing
Drawing Reference :	-
Rev. :	00



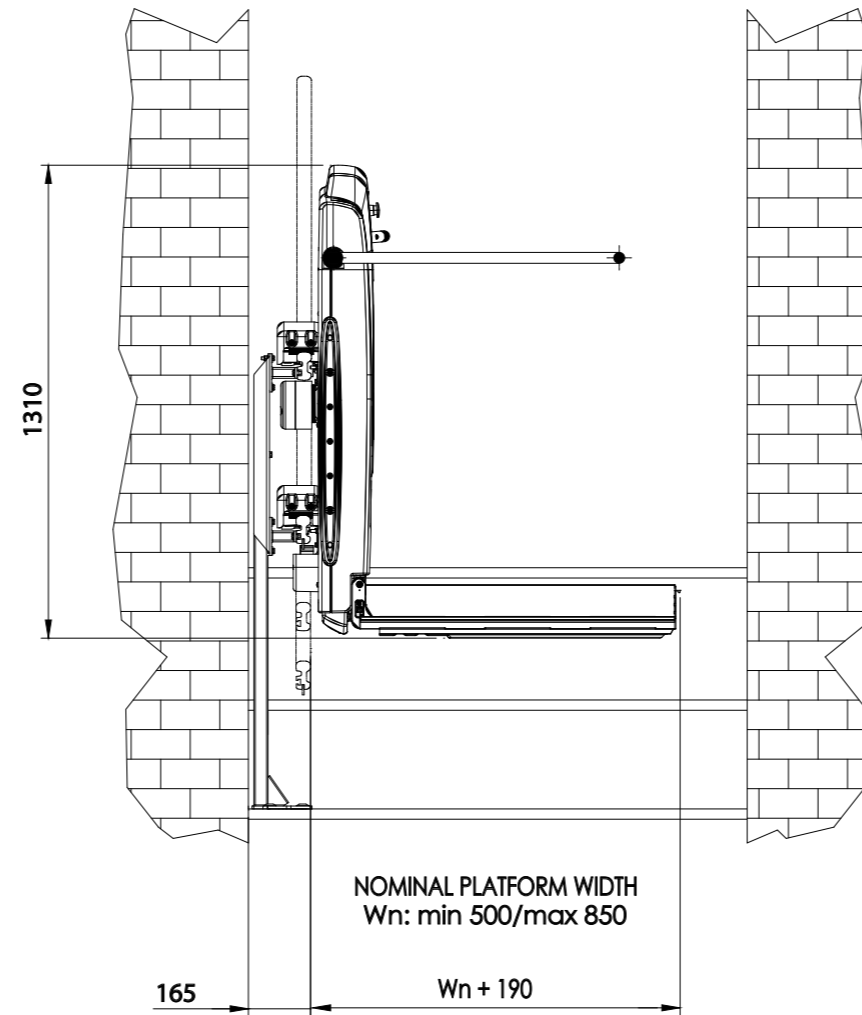
ThyssenKrupp Encasa

Supra overall dimensions - Light stanchions

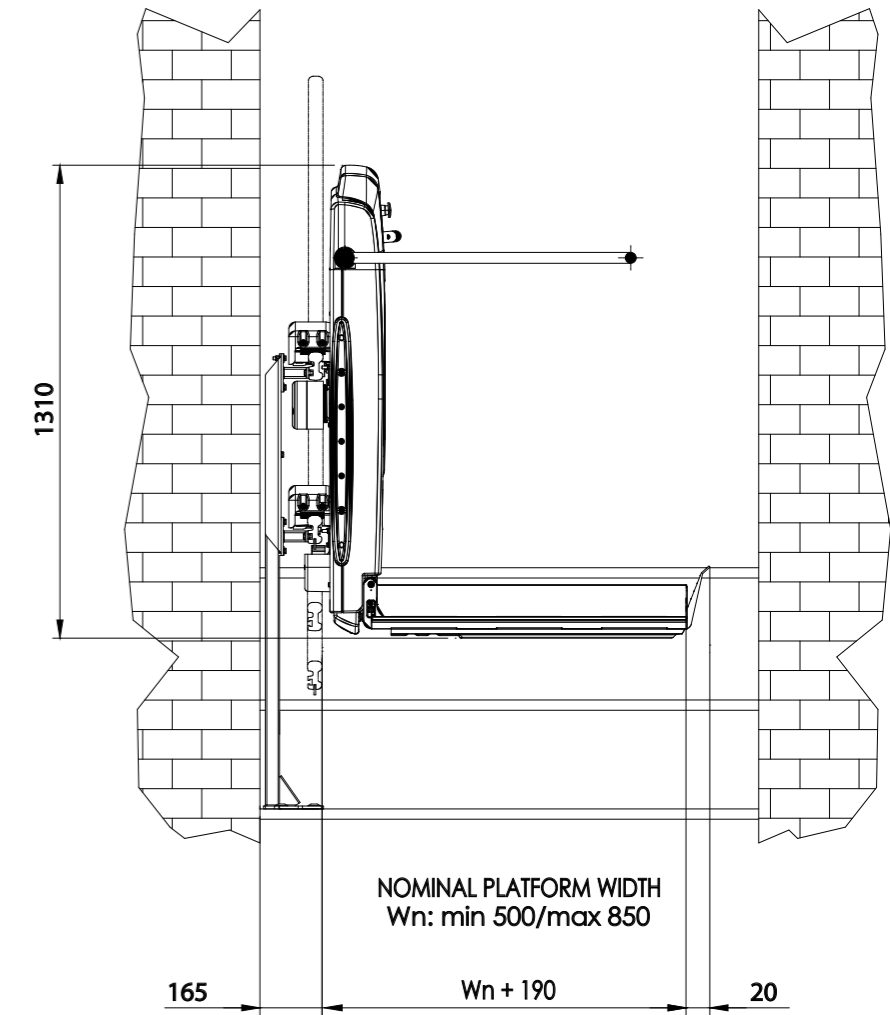
FOLDED PLATFORM - SIDE VIEW



UNFOLDED PLATFORM - SIDE VIEW



UNFOLDED PLATFORM SIDE VIEW WITH LONG SIDE ACCESS



Measurements are an indication.
In order to check a machine feasibility, refer to our organizations.

Where not directly specified, measurements are in millimeters. Tolerances ± 10

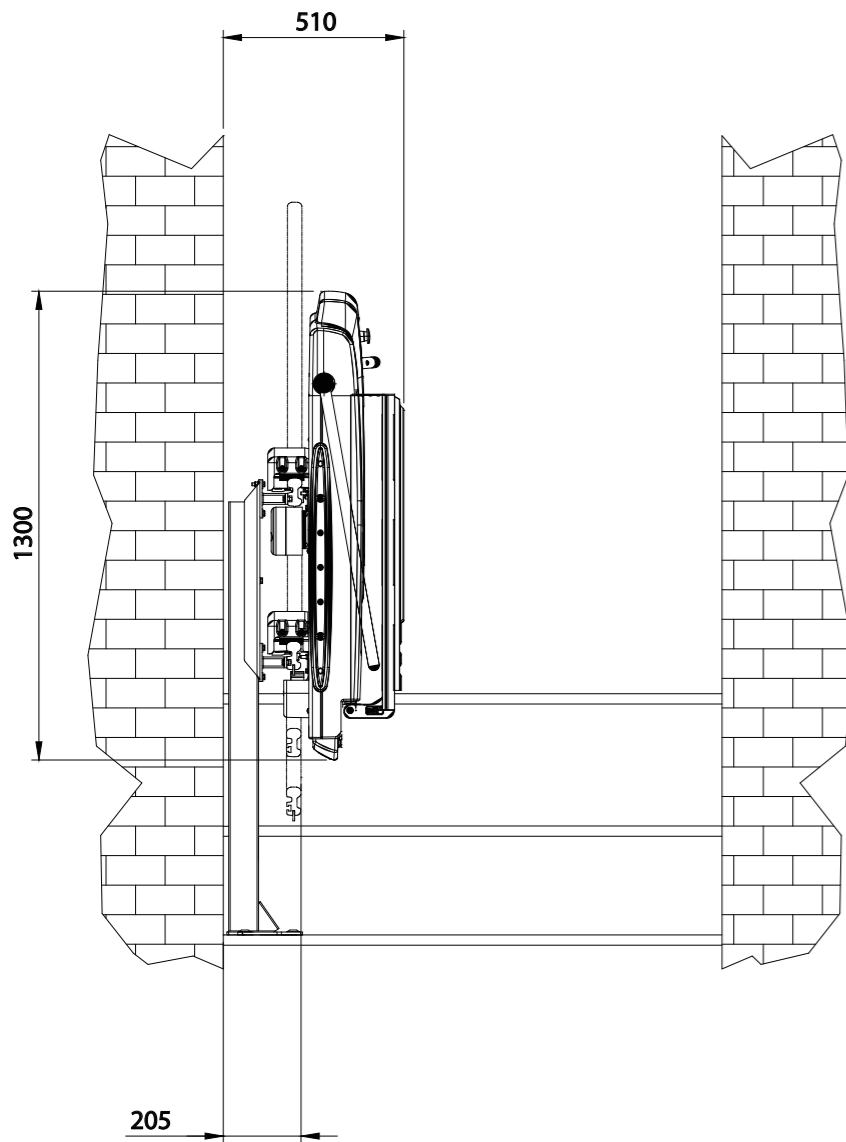
Model :	Supra MY2015
Machine Code :	TP14
Application / Version :	Light stanchions
Drawing Reference :	-
Rev. :	00



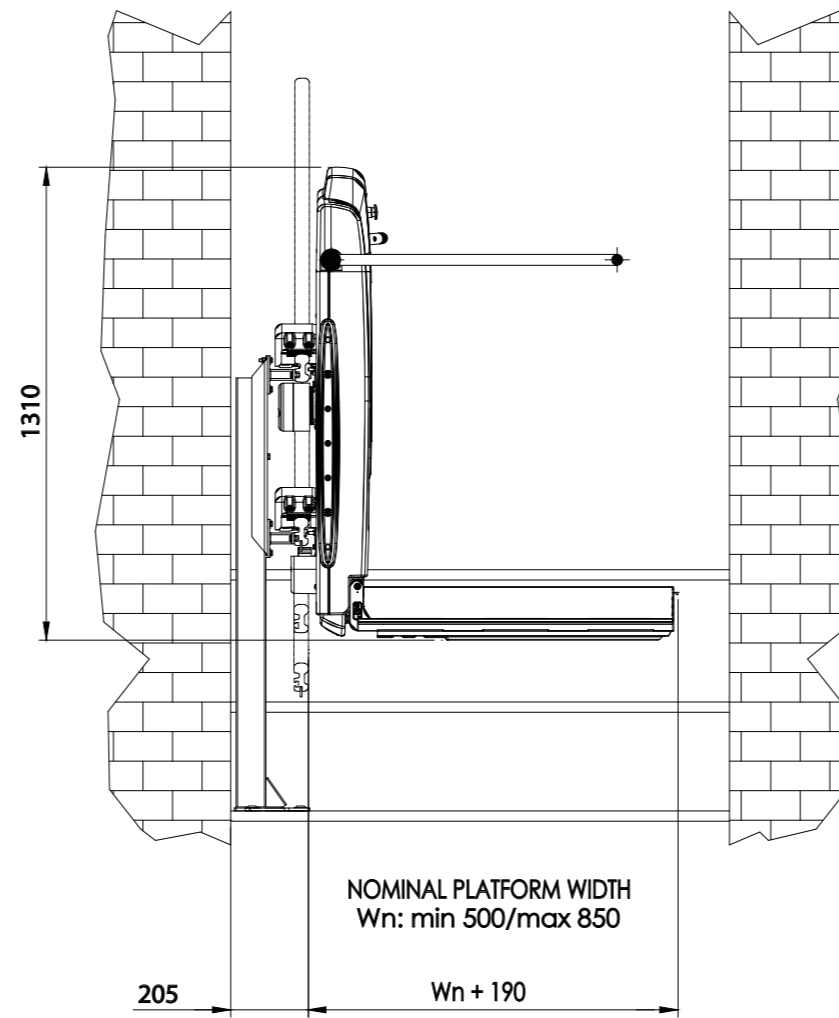
ThyssenKrupp Encasa

Supra overall dimensions - Heavy stanchions

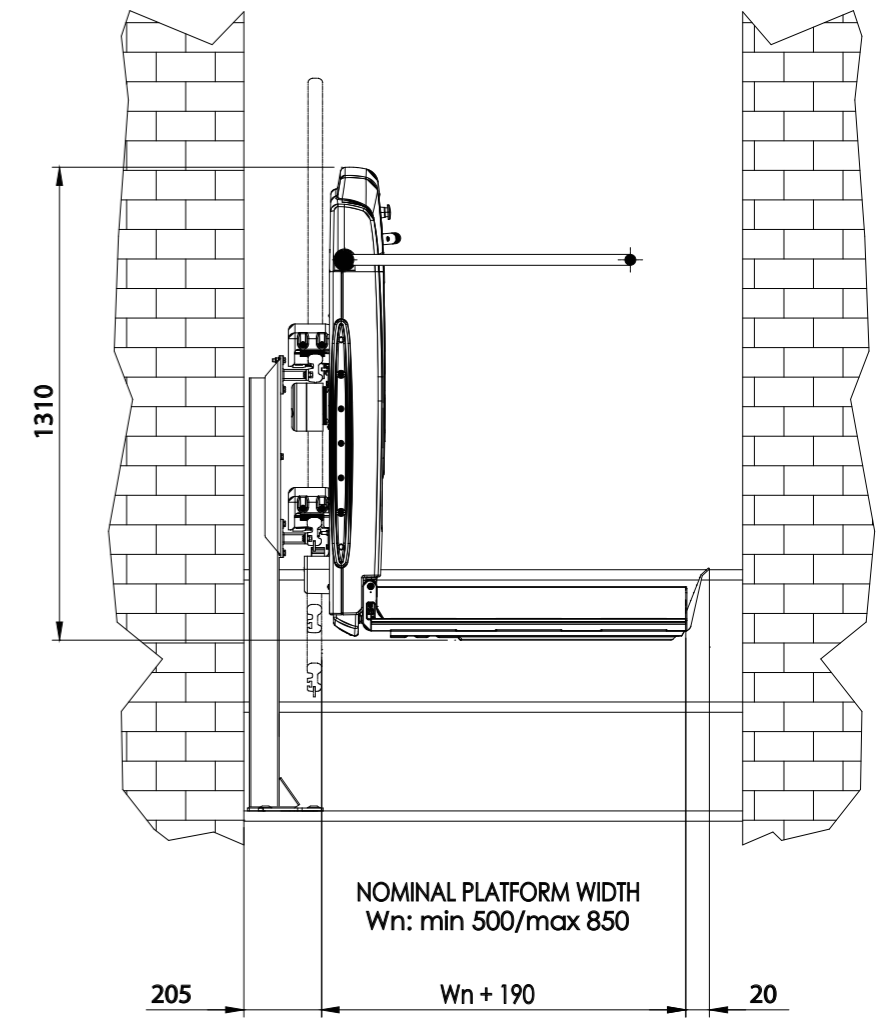
FOLDED PLATFORM - SIDE VIEW



UNFOLDED PLATFORM - SIDE VIEW



UNFOLDED PLATFORM SIDE VIEW WITH LONG SIDE ACCESS



Measurements are an indication.
In order to check a machine feasibility, refer to our organizations.

Where not directly specified, measurements are in millimeters. Tolerances ± 10

Model :	Supra MY2015
Machine Code :	TP14
Application / Version :	Heavy stanchions
Drawing Reference :	-
Rev. :	00

